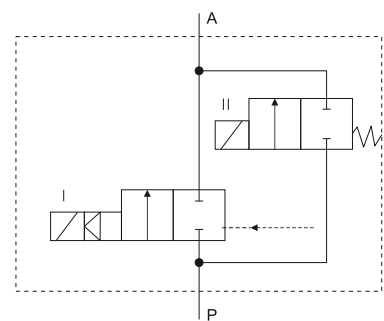


Serie 230
Exmb II T3
230/19/MG34T.

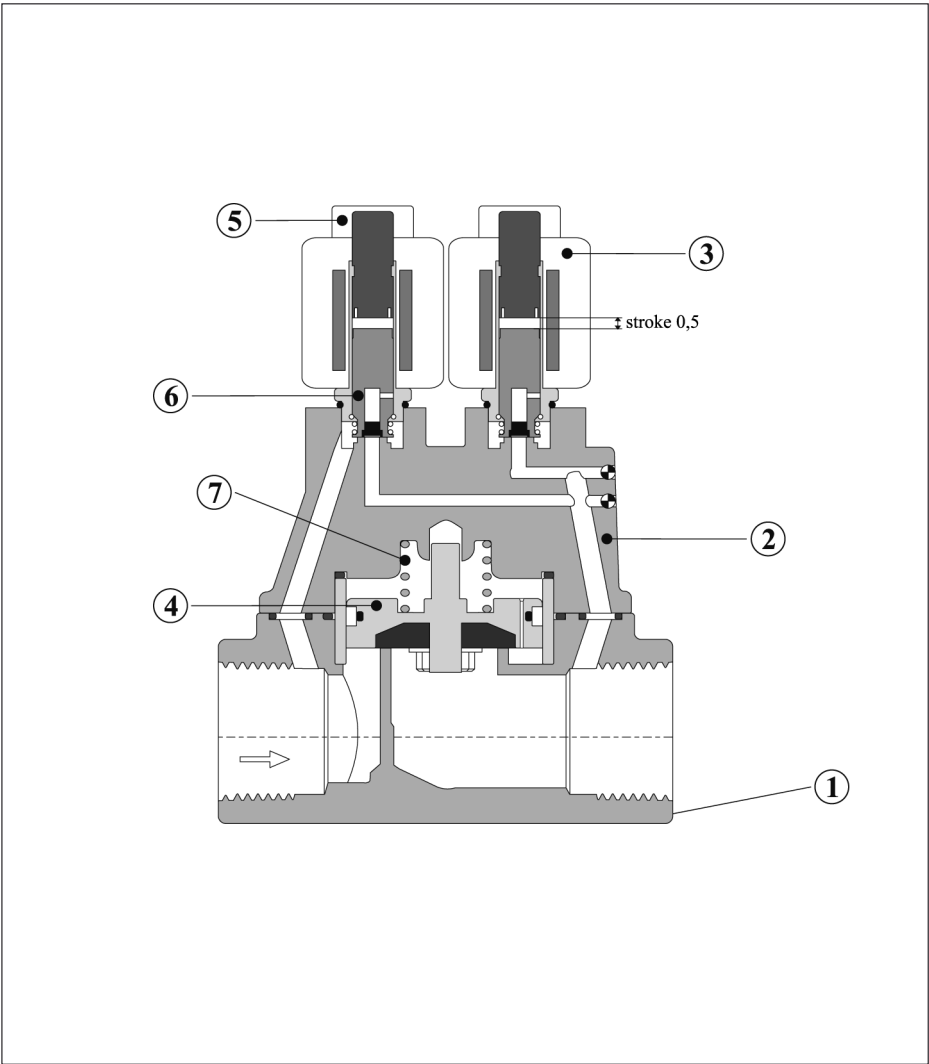
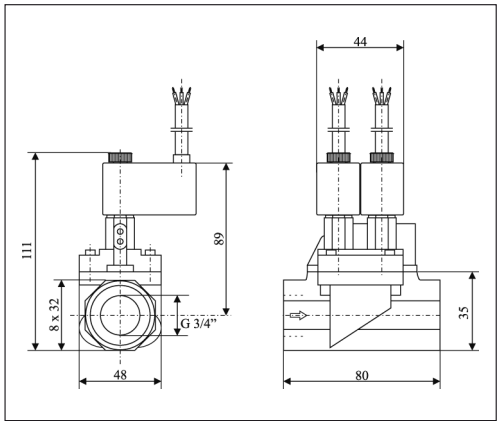
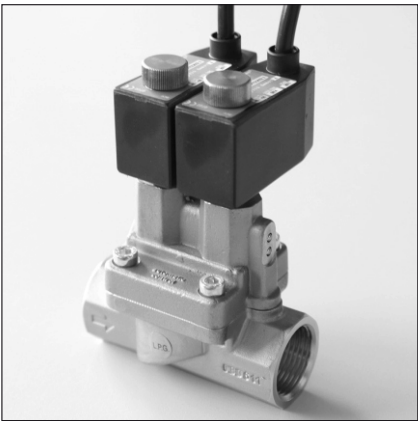
Solenoid valve 2/2 way NC. - LPG, G 3/4 NPT in line
double stage and single stage

-Valve normally closed, NC.



Technical Specification

Valve type	2/2 NC pressure assisted
Valve mounting	Coil vertical upright 90°
Enclosure (IP, Ex)	IP65, ExmbIIT3
Certificate	LOM02 ATEX 2032 (Single coil)
Duty rating	100% permanent or alternative
Medium	GLP gaz
Operating pressure	17bar
Pression max. in service	25bar
Burst pressure	PN40
Minimum opening pressure difference	0,3bar
Minimum opening pressure	25bar
Reponse time high flow rate	<300ms
Reponse time low flow (by pass)	<50ms
Temperature Fluid	-30°C
Temperature range	-40°C to +60°C
Kv (m3/h)	6,0
Electrical connection	Cable 3 wire, length 3.000mm Blue - common brown phase - fuse Green/yellow - ground
Valve inlet	G3/4" thread (length 20mm)



Nº	PIEZA	REFERENCIA	Nº	PIEZA	REFERENCIA
1	CUERPO - BODY		5	TUERCA	0024635
2	TAPA - COVER		6	OPERADOR	SB606-SS
3	BOBINA Eexm II T4	24VDC	7	RESORTE	
4	PISTON				



automatic
control valves, s.l.

Polígono Ibaiondo Local NR1 - Apdo. 217
20120 HERNANI
Tfno.: (34) 943.550.814 - 550.715
Fax: (34) 943.552.620

Solenoid valve 2/2 way NC. - LPG, G 3/4 NPT in line
double stage and single stage
230/19/MG34T.

DN mm.	Conexión R"	Pressure in bar min.-max.	Seal	Kv Main valve M³/h	Kv By-pass m³/h	Art. Nr.* Double stage	Art. Nr* Single stage
19	R3/4"	0,3-25	Vitón	6,0	0,22	1302889	1302888

* Art. Nr. are without coils - Art. Nr. sin bobinas

Please, attache the tension on the order. NR.

Supply voltage	- Tensión standar	AC	DC
		230V	24V

Spare parts

Description	Art. Nr.
Armature 2/2 S.8 - in s.steel	SB606-S
Piston P.T.F.E./Vitón - LINER - steel	2886061
Coil 8-22 ExbIIIT4 24VDC	06140002404 - LOM02ATEX2032X
Double coil ExbIIIT4Gb 24VDC	13140002404 - LOM03ATEX2003X

